

# LIVING ROOM IDEA BOOK





\* Refer Website



#### Warranty

For Warranty  
please refer to website.  
[www.hettich.com/in](http://www.hettich.com/in)

#### Free Design Service:

Looking for Designs to liven up your Living Room, Bedroom, Bathroom & Kitchen. A dedicated team of highly qualified Interior Designers is at your service to provide customised design solution to suit every taste and budget at zero cost to you.

#### Free Consultation at your doorstep:

Looking for perfect Furniture Fittings solution? A dedicated team of highly qualified professionals is at your service to provide the perfect furniture fittings solution to suit your need and budget at zero cost to you.

#### Hettich Customer Care Service:

In today's fast paced and technologically advanced era, most of the organizations succumb to the pressure of staying ahead in the competition and often, end up neglecting the most critical aspect of business i.e. CUSTOMERS. Hettich, being a CUSTOMER CENTRIC organization, is very sensitive towards this tendency; hence, we constantly try to provide the best and quality driven products and services.

#### Enquiry & Customer Services

Toll Free : 1800 209 2096 (office hours)  
Email: [sales\\_enquiry@in.hettich.com](mailto:sales_enquiry@in.hettich.com)  
[customer\\_services@in.hettich.com](mailto:customer_services@in.hettich.com)  
[www.hettich.com](http://www.hettich.com)

#### Free Training Services:

Free Training Services for carpenters of trade partners and customers

#### Training Center Address:

Hettich Poddar Wood Work Institute  
Plot No.2, First Floor,  
DLF Industrial Estate - 1  
Near NHPC Metro Station  
Faridabad, Haryana

Email: [info@hpwwi.com](mailto:info@hpwwi.com)  
Ph: 0129 - 4203888



**Hettich Poddar  
WoodWorking  
Institute**

Skillling • Upskilling • Reskilling

## LIVING ROOM IDEA BOOK







## About us

The company's origins date back to 1888, when Karl Hettich began making the new clock component he had invented. By 1930, his descendants had diversified into furniture fittings, setting up production in East Westphalia – a Centre of the German furniture industry.

Today, Hettich, still family owned, has become an industry leader with a worldwide reputation. We're one of the world's largest manufacturers of highquality furniture fittings, with over 6,000 employees in more than 100 countries. The company's success has been built on four enduring values: quality, innovation, close cooperation with customers and absolute reliability. We work to inspire our customers with our ideas and our passion.







image sourced:  
[https://www.architectmagazine.com/aia-architect/aiafeature/design-in-the-time-of-covid-19\\_o](https://www.architectmagazine.com/aia-architect/aiafeature/design-in-the-time-of-covid-19_o)

## Visualizing a Scenario

Life after the Covid-19 outbreak will never be the same as before. We are at the beginning of the end, waiting for a new start. Planet Earth will break its co-operation agreement with humanity unless we urgently revise our behaviour.

The forecasts appear one by one. Some of them are optimistic; some are not. But almost everyone agrees that despite a decline of such unprecedented scale, humanity will still find the strength to recover.

Values will change; our lives and habits will change; and our homes (Living Room) will also change under that influence.



## LIVING ROOM IDEA BOOK

On the same lines, we at Hettich India believe that life will not be the same after the pandemic and will try to do most of our things staying home. People will start redesigning and organising their houses to make it more practical for daily life activities and the living room will play an integral part in helping us do those activities successfully.







## Living Room Overview

With the current pace of changes, our preferences in terms of fashion, food or lifestyle are also changing. To adapt to these changes, we need solutions. Surprisingly, all of this starts with our house, a place which houses and occupies our sweet little memories with friends and families.

The living room is arguably the most important room in the house when it comes to decorating. It is the room where you entertain guests and loved ones, and it is where families tend to spend the bulk of their at-home time together after the kitchen. Decorating your living room should reflect you and your family.

Hettich gives you a glimpse of some ideas about how you can see your living room expand with beauty and make a bold statement.



## 1: Living Room (TV Unit)



## Oblique

A dash of black

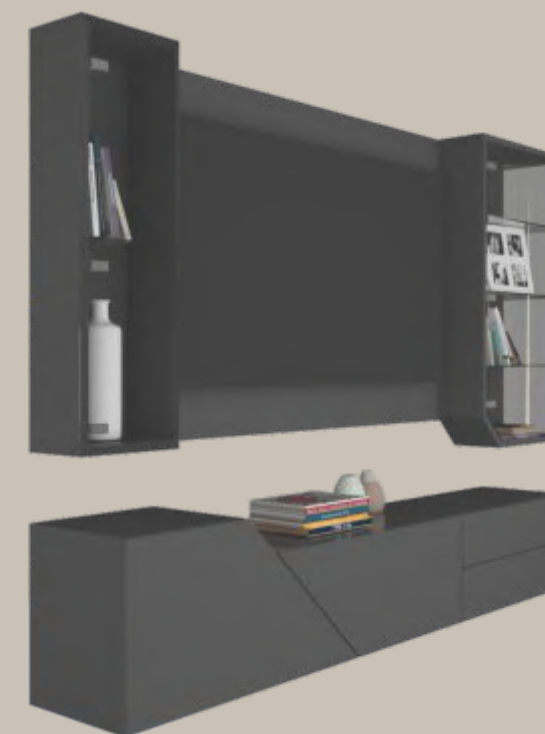
Blend in a modest amount of style to your space with the all-new glass hinges and AvanTech drawers for the perfect combination of style and functionality.

### ADVANTAGES

- Minimal aesthetics
- Ample storage

### CMF USED

- Grey
- Wood & Glass
- Glossy finish



### FITTINGS USED

- AvanTech YOU
- Glass Hinge
- Versa Light



## 2: Living Room (Centre Table)



## Secret Love

Centrepiece of the room

Our mood is the source of our happiness; it decides what to do at what moment. Change your perspective with the sliding mechanism. Now the bar will be the centre of attraction of all the guests.

### ADVANTAGES

- Hidden space
- Create ambience
- Dual functioning

### CMF USED

- Black
- Wood & Glass
- Matte finish



### FITTINGS USED

- SlideLine M
- AvanTech YOU



### 3: Living Room (Bar Cabinet)



## The Cocoon

Comfortable and functional

A piece of furniture allowing your bar to be in a compact form. SlideLine M allows hiding the whole cabinet and enhance its beauty towards the home environment.

#### ADVANTAGES

- Sleek look
- Seamless finish
- Enough storage

#### CMF USED

- Grey
- Wood
- Matte finish



#### FITTINGS USED

- SlideLine M
- Sensys Hinge



#### 4: Living Room (TV Unit)



## Cozy Connection

Enhance your indoor space

Entertainment is just a slide away. Hide & Slide design lets you make your living area aesthetically beautiful with ample storage and access area using SlideLine M.

#### ADVANTAGES

- Strength and durability
- A decor staple
- Ample storage

#### CMF USED

- Grey
- Wood
- Matte finish



#### FITTINGS USED

- SlideLine M
- Quadro push to open runner



## 5: Living Room (Décor Unit)



## Pure Certainty

Style statement of your home

Functionality and aesthetics are the key elements of a trendy and perfect display cabinet for residential purposes. Minimal geometric shapes and colours are played out in a manner that it gives the perfect combination of function and design.

### ADVANTAGES

- Maximum utility
- Simple and sleek look
- Smooth functioning

### CMF USED

- Black & Green
- Wood & Glass
- Matte finish



### FITTING USED

- SlideLine M





AvanTech YOU



ArciTech



InnoTech

## Drawer Systems

Unlimited options. Zero compromise.

Hettich Drawer System is designed to suit any type of furniture be it the kitchen, bathroom, bedroom, living room or office. These soft close drawer systems are convenient, space saving, sturdy, smooth running and attractive. You can choose from the single or double walled side profiles, available in a wide range of options.



Atira



## 6: Living Room (Storage Unit)



## Simple & Significant

Minimalism its sheer flamboyance

Minimal geometric lines are played in a manner that give the perfect combination of aesthetics and functional design. Light and glass add to the overall appeal of the decor in the living room.

### ADVANTAGES

- Sleek symmetrical unit
- Smooth functioning
- Enough storage and decor

### CMF USED

- Chrome yellow & Grey
- Wood
- Matte finish



### FITTINGS USED

- WingLine L
- CUBE



## 7: Living Room (Storage Unit)



## Pretentious

A timeless aesthetic furniture

Functionality and aesthetics are the main elements of a timeless design, which remains relevant and pleasing for years to come.

### ADVANTAGES

- Hide things which are not necessary
- Makes living room more organised

### CMF USED

- Soft moss & Grey wood
- Wood
- Matte finish



### FITTINGS USED

- WingLine L
- Vertico Synchro



## 8: Living Room (TV Unit)



## Time Savior

Move with time

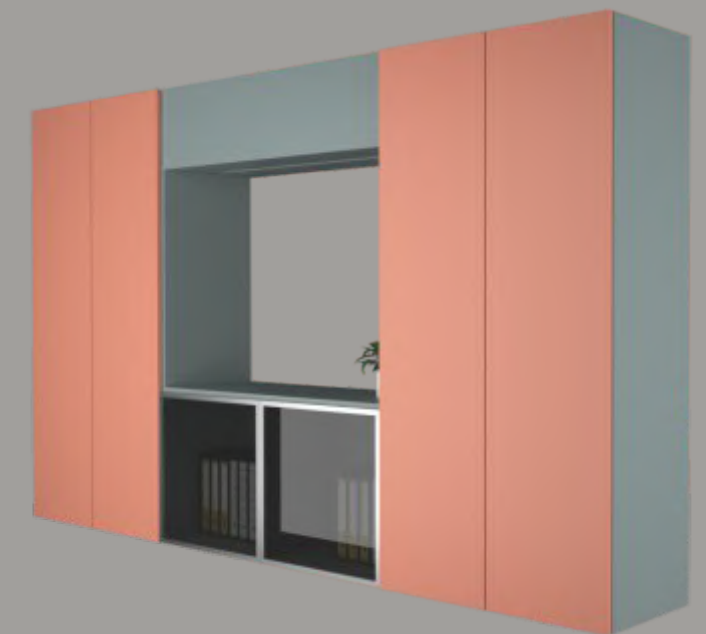
Be on time, be with trend!  
Experience the smooth and effortless working  
with our most exclusive fittings.

### ADVANTAGES

- Minimal design is less distracting
- Extra storage for books

### CMF USED

- Soft moss & Mamalade
- Wood
- Matte finish



### FITTINGS USED

- WingLine L
- Sensys Hinge
- Glass Hinge



## 9: Living Room (TV Unit)



## Moderate

The utility adds to its sophistication

Utility and sophistication are the cornerstone of this TV unit that provide a perfect look to your living room with its sleek and perfect appearance.

### ADVANTAGES

- Create ambience where ever you want
- Symmetric design

### CMF USED

- Beige
- Wood
- Matte finish



### FITTINGS USED

- WingLine L
- Lega Move
- ArciTech



## 10: Living Room (TV Unit)



## Drive Element

Luxurious design

A geometric yet minimal looking TV unit can make the whole space luxurious. This TV unit comes with a mesmerizing simple line composition, breathtaking style and unique in-built storage unit, that uplift your house from a regular house to a beautiful exclusive abode.

### ADVANTAGES

- Aesthetic appearance
- Storage solutions
- Organized TV unit

### CMF USED

- Grey & Brown
- Wood
- Matte finish



### FITTINGS USED

- WingLine L
- AvanTech YOU





Obsidian Black Hinge



Sensys Hinge

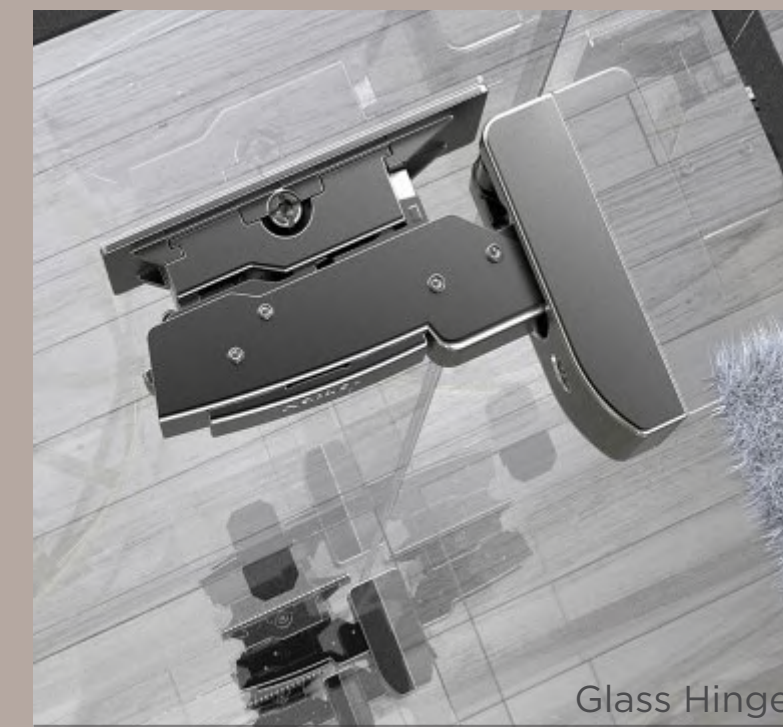


Onsys Hinge

## Hinges

The silent connection

Hinges from Hettich are the heart of good doors: innovative, reliable and long lasting. They provide top quality as well as clever mounting and adjustment capabilities. Hettich fast assembly hinges are particularly easy to fit and can be adjusted without any effort. Multiple award winning Sensys hinge has revolutionised the world of hinges with its invisibly integrated Silent System. Together with Onsys and Intermat, these hinges provide solutions for virtually any application.



Glass Hinge



## 11: Living Room (Book Shelf)



## Zing Bushel

Reflect your style

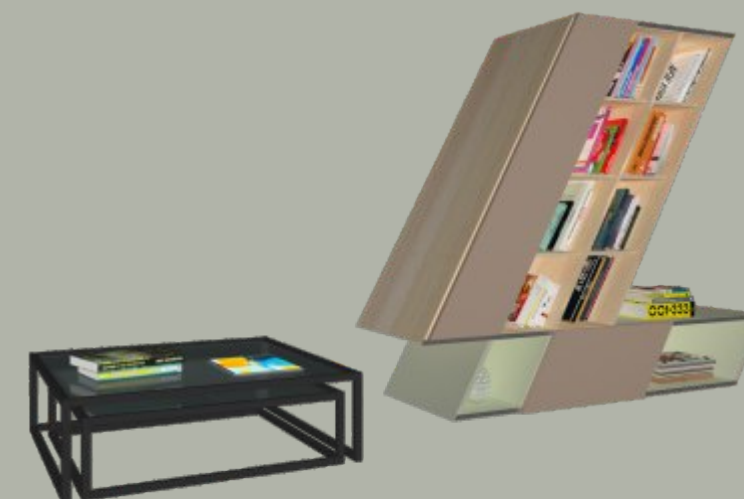
The uniqueness of this design is its lines and form. This modern Z form is sleek and fluent. It allows a single pattern with a sliding shutter, there why enhancing the ease of working.

### ADVANTAGES

- Sleek bookshelf
- Smooth sliding
- Enough storage on counter

### CMF USED

- Grey & Green
- Wood
- Matte finish



### FITTINGS USED

- SlideLine M
- CUBE



## 12: Living Room (Glassware Display)



## Full Moon

Storage at the forefront

The circle cut-out depicts a moon embodied by a noisy blue-tinted glass texture making a perfect spot for premium bottles of alcohol in your living room.

### ADVANTAGES

- Spotlight area
- Minimal aesthetics
- Ample storage

### CMF USED

- Black & Grey
- Wood & Glass
- Glossy finish



### FITTING USED

- SlideLine M

### 13: Living Room (Console Unit)



## Exhibit

Showcase your style

A simple straight form creating a vastness to your space through sleek drawers and ample storage to showcase your most prized possessions.

#### ADVANTAGES

- Minimal aesthetics
- Ample storage

#### CMF USED

- Black
- Wood
- Matte finish



#### FITTING USED

- AvanTech YOU



## 14: Living Room (TV Unit)



## Parallel

Drawing parallels are very important

Straight forward design for your TV unit which provides ample storage to store your articles and also having a sleek overhead with beautiful sliding mechanism.

### ADVANTAGES

- Aesthetic appearance
- Storage solutions
- Organized TV unit

### CMF USED

- Grey & Pink
- Wood
- Matte finish



### FITTINGS USED

- SlideLine M
- Sensys Hinge
- Quadro Runner

## 15: Living Room (Storage Console)



## Friends Forever

Classic essence of extravagance

This console provides ease and comfort on either ends with more utility in your hallway.

### ADVANTAGES

- Storage console
- Extended platform
- More accessibility

### CMF USED

- Wood
- Silver
- Chrome finish



### FITTINGS USED

- WingLine L
- AvanTech YOU
- Worktop Extension





## Drawer Runners

Smooth and effortless drawer movement

When it comes to runners for furniture drawers and domestic appliances, product diversity from Hettich is unbeatable. Hettich range of runners provide the best solution for convenient, reliable drawer opening and closing for all classes of furniture and domestic appliances.





## 16: Living Room (Work Desk)



## Trio

Pleasure of three combined

This living room space is so diverse and dynamic that it houses potential perks of office working, living and relaxing. The aesthetically pleasing and high on convenience home office set-up will ease up your life.

### ADVANTAGES

- Minimal aesthetics
- Ample storage

### CMF USED

- White
- Wood
- Matte finish



### FITTINGS USED

- WingLine L
- LegaDrive
- Systema 2000



## 17: Living Room (Storage Console)



## Sumptuous

Display your personality

A living room furniture that comprises of antire storage space with an exceptionally sleek finish and with the help of magical SlideLine M making the doors move smoothly in one touch.

### ADVANTAGES

- Organized storage
- Aesthetic appeal
- Smooth functioning

### CMF USED

- Dusty Plum & Black
- Wood
- Glossy finish



### FITTING USED

- SlideLine M



## 18: Living Room (TV Unit)



## Semplice

Simple yet Effective

A bold look to a simple form. Useful in every manner. Carries out multiple storage options and tall linear gradient glass to add character to the piece and to space.

### ADVANTAGES

- Aesthetic appearance
- Storage solutions
- Organized TV unit

### CMF USED

- Blue
- Wood
- Matte finish



### FITTINGS USED

- Glass Hinge
- AvanTech YOU



## 19: Living Room (Aquarium Storage)



## Aqua

Feel of Ocean

Have an exquisite feeling of being close to the sea. This piece houses one of the most prime fittings in Hettich. You are making your experience pragmatic.

### ADVANTAGES

- Minimal aesthetics
- Ample storage

### CMF USED

- Grey & White
- Wood & Glass
- Matte finish



### FITTINGS USED

- AvanTech YOU
- LegaDrive



## 20: Living Room (Library)



## Accent

Give your space a whole new meaning

A simple twist in its form gives out a whole new perspective to space. A book hoarder? Not a problem, arrange it in the simplest way possible and glide it with style. Let this piece make a statement of its own.

### ADVANTAGES

- Smooth sliding
- Enough storage

### CMF USED

- Orange & Black
- Wood
- Matte finish



### FITTINGS USED

- SlideLine M
- Sensys Hinge
- Flap Fitting





## Sliding Door Systems

Slide It. Love It.

Hettich offers a wide range of innovative sliding systems that help create more room in the room. Various sliding and folding door systems with different runner types provide solutions for all furniture segments. Door units in all sizes and materials are moved with effortless ease. And Silent System provides luxuriously soft opening and closing.





**Registered & Head Office:**  
**Hettich India Private Limited**

302, Durolite House,  
Opp. SAB TV, New Link Road,  
Andheri (West), Mumbai - 400 053  
Phone: +91 22 2674 3289/3356/4089  
Fax: +91 22 2674 3267

**Delhi Office:**  
**Hettich India Private Limited**

A-26/4, 1st floor,  
Mohan Co-operative Industrial Estate,  
New Delhi - 110 044  
Phone: +91 11 4889 4000, 4889 4005  
Fax: +91 11 4889 4044

**Vadodara Factory:**

Plot No. 304, Dhanora,  
Nandesari Road,  
Near ECPL,  
Village - Dhanora - 391 346  
Dist. - Vadodara  
Tel: + 91 26 5656 9003

**Indore Factory:**

Plot No. 1, Sector - 5,  
Mhow - Neemuch Road,  
Opp Lupin Ltd, Pithampur  
Industrial Area, Pithampur  
Madhya Pradesh -454 774

**Application Centres:**

**New Delhi:**

61, Panchkuian Road,  
New Delhi - 110 001  
Ph. No. : +91 11 2358 0713,  
2358 4603

**Mumbai:**

202, Durolite House, Opp. SAB TV,  
New Link Road, Andheri ( West),  
Mumbai - 400 053  
Ph.No. : +91 22 2639 9707

**Chennai:**

"Heavitree", Ground Floor,  
47, Spur Tank Road,  
Chetpet, Chennai - 600 031  
Ph. No. : +91 44 4263 7227

**Kolkata:**

2nd Floor, Unit Number 2A,  
Tirumala 22,  
East Topsia Road,  
Kolkata - 700 046  
Ph. No. : +91 85850 44725

**Hyderabad:**

" Sai Krishna "  
797 - A, Road No. 36,  
Jubilee Hills,  
Hyderabad - 500 034  
Ph. No. : +91 40 2355 8994

**Ahmedabad:**

1st Floor, Unit No. 102,  
Safal Pegasus,  
Anand Nagar,  
Ahmedabad - 380 015,  
Ph. No. : +91 79 4032 2824

**Bangalore:**

Adventz Center, Ground Floor 28,  
Cubbon Road, Shivaji Nagar,  
Bangalore - 560 001  
Ph. No. : +91 80 4530 0400,  
4530 0401

**Kochi:**

41/2062D, 2nd Floor  
Palarivattom signal  
junction, NH 47 By-pass,  
Kochi - 682 028  
Ph. No. : +91 93 4900 3909

**Indore:**

Office No.106 and 107-A,  
"Brilliant Titanium",  
Plot No.9, Scheme No.78, Part-II,  
Indore - 452 010, Madhya Pradesh,  
Ph. No. : +91 93 0171 7343

**Chandigarh:**

2nd Floor, Aspire Tower,  
Plot no. 55, Industrial  
& Business park, Phase 1,  
Chandigarh - 160 002  
Ph. No. : +91 93 1755 7195

**Training Center Address:**

Hettich Poddar Wood Work Institute  
Plot No.2, 1st Floor, DLF Industrial Estate-1  
Near NHPC Metro Station,  
Faridabad- Haryana  
Ph: 0129 - 4203888  
Email: info@hpwwi.com

**Enquiry & Customer Services**

Toll Free : 1800 209 2096 (office hours)  
Email: sales\_enquiry@in.hettich.com  
customer\_services@in.hettich.com  
www.hettich.com

Scan QR Code



Visit us  
www.hettich.com



Master Catalogue



CargoTech  
Master Catalogue



Interested?  
Explore Design options



# LIVING ROOM IDEA BOOK



The Living Room | IdeaBook | SEPTEMBER 2020

Hettich India Private Limited  
302, Durolite House,  
Opp. SAB TV, New Link Road,  
Andheri (West), Mumbai - 400 053  
Phone: +91 22 2674 3289/3356/4089  
Fax: +91 22 2674 3267

Enquiry & Customer Services  
Toll Free : 1800 209 2096 (office hours)  
Email: [sales\\_enquiry@in.hettich.com](mailto:sales_enquiry@in.hettich.com)  
[customer\\_services@in.hettich.com](mailto:customer_services@in.hettich.com)  
[www.hettich.com](http://www.hettich.com)

Technik für Möbel

  
**Hettich**